



## D-PH 510-IX (Three Needles Chain Stitch)

## D-PH 610-IX (Two Needles Lock Stitch)

POCKET HEMMING AUTOMAT FOR JEANS



Website



Youtube



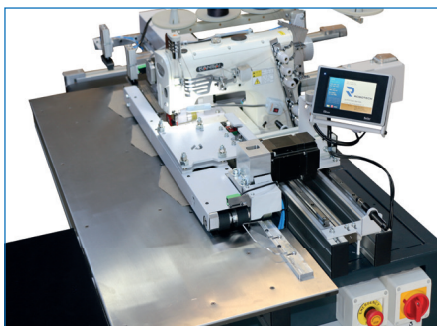
### PERFORMANCE

#### D-PH 610-IX

Lock Stitch (two needles):  
16.000 Pockets / 8 Hours  
2000 Pockets / 1 Hour

#### D-PH 510-IX

Chain Stitch (three needles):  
17.600 Pockets / 8 Hours  
2200 Pockets / 1 Hour



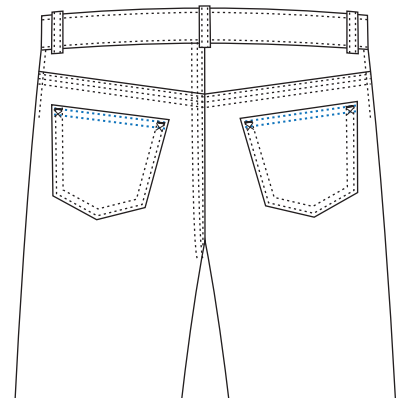
D-PH 510-IX and D-PH 610-IX are an Automatic Pocket Hemming units for jeans and similar sportswear/sportswear. The machine is equipped with a three needle **Kansai** chain stitch sewing head or alternatively a two needle **Brother** lock stitch sewing head. The machine performs the hemming on different fabric types (from heavy to stretch denim) through simple settings without a change of apparatus or parts. A single adjustable folder allows to single and double hem and change height

## TECHNICAL SPECIFICATIONS

- Computer-controlled, high-speed machine with **Beijer Electronics**
- Windows Based Color Graphic Touch Screen Control Panel
- Panel and with 50 Different Programming
- **PLC** Control Unit & **Panasonic** Servo Motor
- Sensors for detecting thread breakage
- Automatic thread trimmer
- Thread breakage sensor
- Suction system for waste thread
- Special stacker for proper pockets stacking and collection

## ADVANTAGES

- Fabric transport feeding system
- Belt transport pressure control
- None-skilled labor operation with maximum quality
- Minimum running cost with no helper
- Easy set up and maintenance



## TECHNICAL DETAILS

Needle Gauge: 6.4mm  
 Max. Sewing Speed: **Kansai**: 4500 r.p.m or **Brother**: 3000 sti/min  
 Stitch type: Chain stitch – **Kansai** or Lock stitch – **Brother**  
 Stitch Length: **Kansai**: 6 - 14,0 mm / **Brother**: max: 7 mm  
 Connection Voltage: A.C. 220 V, 50/60 Hz  
 Air Pressure : 6 bar

## DIMENSIONS

L: 130 cm / W: 110 cm / H: 150 cm  
 Packing Size : 120 cm x 120 cm x 160 cm  
 Machine Net Weight : approx. 250 kg  
 Machine Gross Weight : approx. 270 kg

